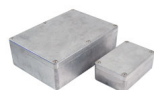


## Aluminio Inyectado alta resistencia



Calificación: Sin calificación

[Haga una pregunta sobre el producto](#)

Descripción

[Descargar PDF](#)

Heavy Duty Diecast Boxes

Heavy duty aluminium diecast boxes for industrial, control and mechanical engineering applications. Ideal for extreme conditions.

- Aluminium Alloy
- Tongue and groove construction
- Lid incorporates a recessed gasket seal
- PCB pillars in base
- Low draught angle provides for maximum internal volume
- Neoprene gasket for IP65 seal